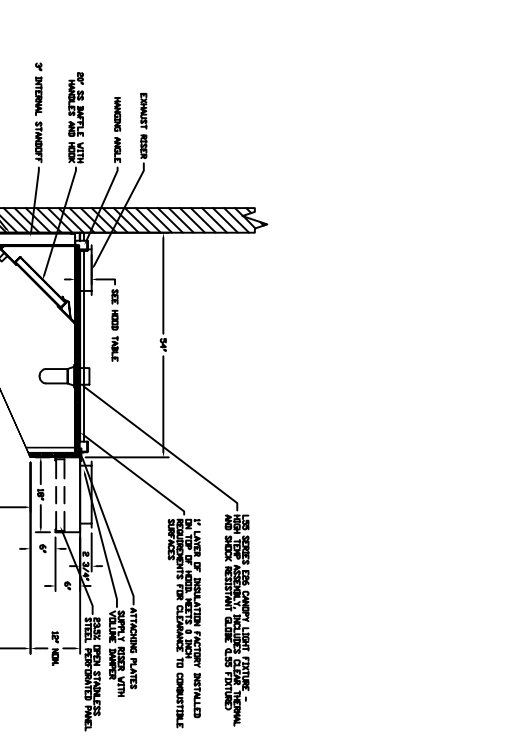
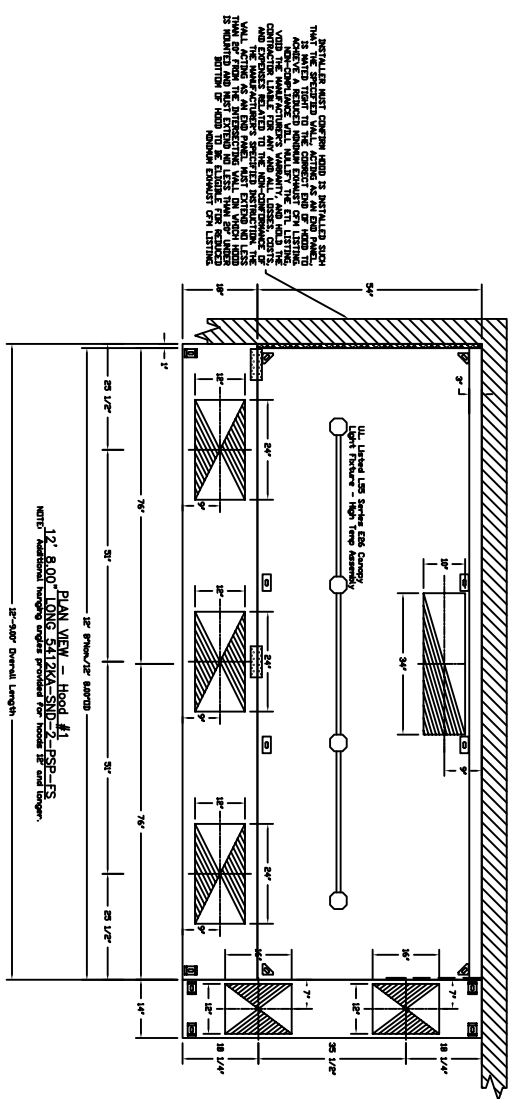


HOOD INFORMATION				FILTERS				LIGHTS				EXHAUST SYSTEMS				ELECTRICAL				SCOURERS				FIRE DAMPING SYSTEMS							
HOOD TAG NO.	TYPE	BTU/HEIGHT	LENGTH	EFFICIENCY	# 7	BTU	TYPE	VOLTS	LOCATION	SIZE	TYPE	SIZE	MODEL #	QUANTITY	TYPE	LENGTH	WIDTH	HEIGHT	TYPE	WIDTH	LENGTH	DIA.	CFM	S.P.	TYPE	WIDTH	LENGTH	DIA.	CFM	S.P.	
1	SS Bayfire with Handles	9	20'	30%	4	4	SS Series EBS	NO																							

HOOD INFORMATION - Job#####											
HOOD TAG	MODEL	LENGTH	COORDINATE	TOTAL LENGTH	EXHAUST SYSTEMS	RESERVOIR	HOOD CONSTRUCTION	HOOD END TO ROOF	HOOD END TO ROOF	HOOD END TO ROOF	HOOD END TO ROOF
1	14-250-2-PS-PS	12'	600	3615	4"	34"	34"	34"	34"	34"	34"

PREPARED SUPPLY PLenums(S)											
HOOD TAG	POS.	LENGTH	WIDTH	HEIGHT	TYPE	WIDTH	LENGTH	DIA.	CFM	S.P.	TYPE
1	Front	15'	18"	6"	MA	12"	24"	655	0.13'		MA
	Right	7'	14"	6"	MA	12"	24"	655	0.13'		MA

HOOD OPTIONS			
HOOD TAG	OPTION	DESCRIPTION	REMARKS
1		LEFT END STANDER/END/SLP 1' Wide 54" Long Insulated RIGHT QUARTER END PANEL 25" Top Width 0" Bottom Width 23" High 430 SS INSULATION FOR TOP OF HOOD	
		LEFT WALL AS END PANEL	



FOR QUESTIONS, CALL THE REGIONAL SALES MANAGER  
 PHILADELPHIA REGION  
 550 W. BRIDGE ST. SPACE 2A  
 MORRISVILLE, PA 19067  
 PHONE: (610)-261-7582

KITCHEN AIR INC HOODS ARE BUILT IN COMPLIANCE WITH

ETL LISTED TO UL-710 REQUIREMENTS  
 NFPA 96 - 2014 EDITION  
 IFC 2012

PLEASE NOTE: THE HOOD MAY BE INSTALLED WITH A 10 INCH DISTANCE TO COMBUSTIBLE MATERIALS AS SPECIFIED IN ONE OF THE FOLLOWING METHODS:  
 1 INCH LAYER OF INSULATION (TYPE 473)  
 OWNERS CORNING, JOHNS MANVILLE, OR  
 1 INCH INSULATED BACKSMASH  
 BACK-RETURN (BR) SUPPLY PLENUM WITH 1 INCH LAYER OF INSULATION  
 THESE RATINGS APPLY TO TOP, ENDS, BACK AND FRONT OF THE EXHAUST HOOD

PLEASE NOTE: THE HOOD MAY BE INSTALLED WITH A 10 INCH DISTANCE TO COMBUSTIBLE MATERIALS AS SPECIFIED IN ONE OF THE FOLLOWING METHODS:  
 3 INCH INSULATED STAINLESS STEEL WRAPPER / ENCLOSURE SYSTEM  
 3 INCH FACTORY INSTALLED END STANDOFF BACK-RETURN (BR) SUPPLY PLENUM  
 THESE RATINGS APPLY TO TOP, ENDS, BACK AND FRONT OF THE EXHAUST HOOD

SECTION VIEW - MODEL 5412M-SVD-2-PSP-PS

FOR QUESTIONS, CALL THE REGIONAL SALES MANAGER  
 PHILADELPHIA REGION  
 550 W. BRIDGE ST. SPACE 2A  
 MORRISVILLE, PA 19067  
 PHONE: (610)-261-7582

DATE:	01/00/00
DWG. #:	#####
DRAWN ##:	
BY:	
SCALE:	3/4" = 1' - 0"
MASTER DRAWING	
SHEET NO.	1

SAMPLE JOB

KITCHEN AIR INC

REGION 12 - PHILADELPHIA, PA  
 550 W. BRIDGE ST., SPACE 2A, MORRISVILLE, PA 19067

www.kitchenairinc.com

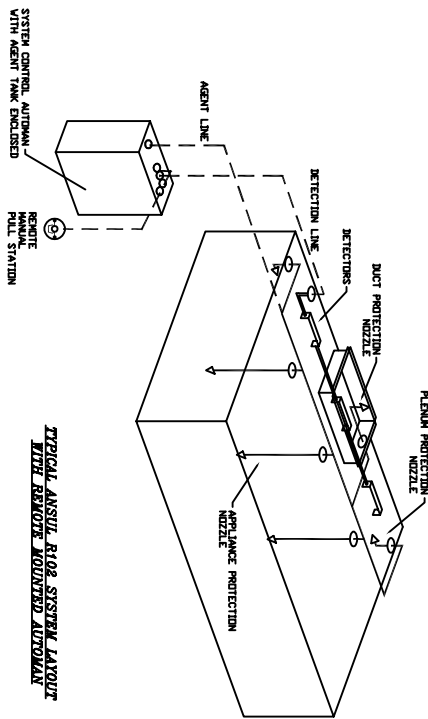
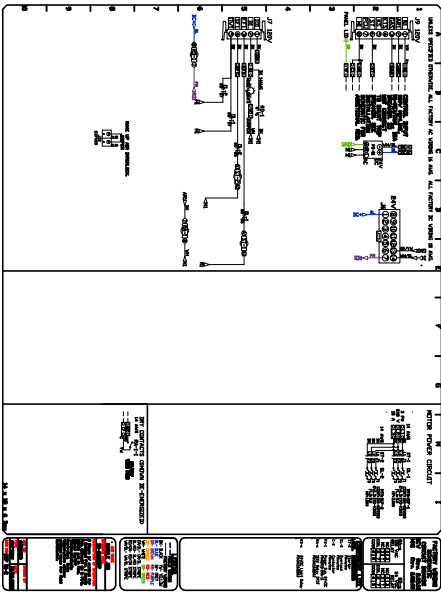
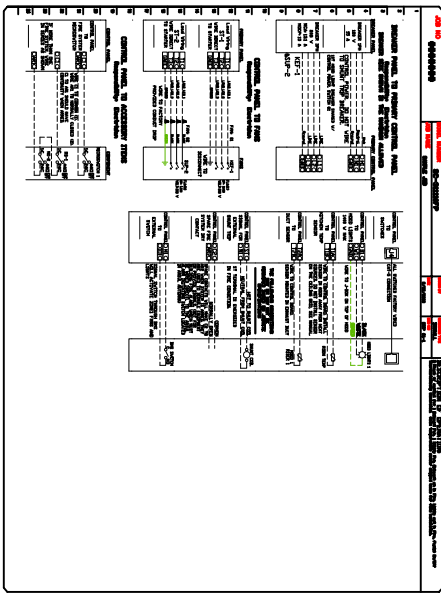
REVISIONS	NO.	DATE	DESCRIPTION
1			
2			
3			
4			



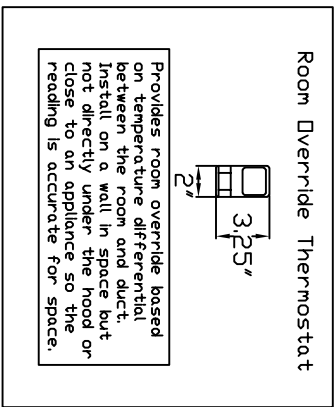
PARTS		QUANTITY		OPTION		FANS CONTROLLED	
NO.	DESCRIPTION	LOCATION	AMOUNT	TYPE	NO.	DESCRIPTION	AMOUNT
1	SC-201007	Wall Mount in SS Hood	1 Unit	Exhaust	3	Exhaust	3
		Mount Box	1 Fan	Supply	3	Supply	3
				Exhaust	4	Exhaust	4

Duct mounted thermostats for use in automatically activating fans whenever cooking appliances are being used.

Switch closes on temperature rise. One thermostat and temperature controller per exhaust riser.

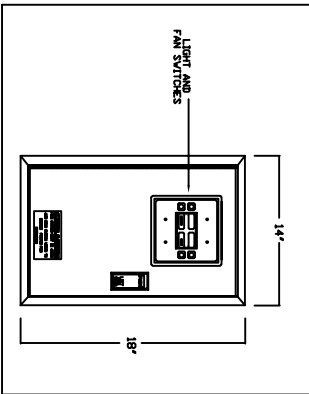


TYPICAL ANSUL, RISE SYSTEM LAYOUT WITH REMOTE MOUNTED AUTOMATIC



Provides room override based on temperature differential between the room and duct. Install on a wall in space but not directly under the hood or close to an appliance so the reading is accurate for space.

DETAIL OF REMOTE SYS BOX



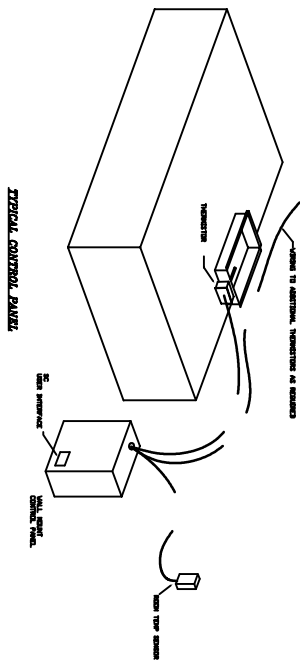
**SPECIFICATIONS**

THE RESTAURANT FIRE SUPPRESSION SYSTEM SHALL BE THE PRE-ENGINEERED WITH UNDERWRITERS LABORATORIES, INC. LISTED APPROVED MODEL.

THE SYSTEM SHALL BE CAPABLE OF AUTOMATIC DETECTION AND ACTIVATION WITH LOCAL OR REMOTE MANUAL ACTIVATION. ACCESSORIES SHALL BE AVAILABLE FOR MECHANICAL OR ELECTRICAL GAS LINE SHUT-OFF APPLICATIONS.

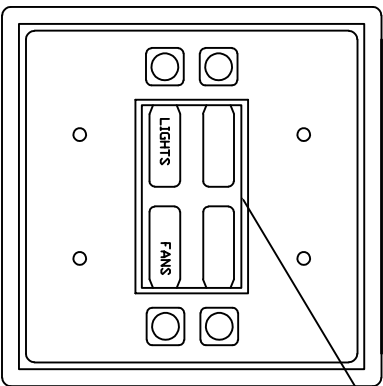
THE EXTENDING AGENT SHALL BE A POTASSIUM CARBONATE, POTASSIUM ACETATE-BASED FORMULATION DESIGNED FOR FLAME KNOCKDOWN AND SCOURING OF SURFACES. THE AGENT SHALL BE STORED IN A PRESSURIZED CONTAINER WITH INSTRUCTIONS FOR LIQUID AGENT HANDLING AND USE.

THE REGULATED RELEASE MECHANISM SHALL BE COMPATIBLE WITH A FUSIBLE LINK DETECTION SYSTEM. THE FUSIBLE LINK SHALL BE SELECTED AND INSTALLED ACCORDING TO THE OPERATING TEMPERATURE IN THE INSTALLATION. THE FUSIBLE LINK SHALL BE SUPPORTED BY A BRACKET ASSEMBLY.



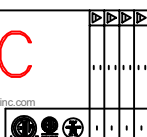
TYPICAL CONTROL PANEL

ALARM INDICATING LED SCREEN MODEL TYPE.



TOUCH SCREEN INTERFACE

NO.	DATE	DESCRIPTION
1	00/00/00	ISSUED FOR CONSTRUCTION
2	00/00/00	REVISION
3	00/00/00	REVISION



# KITCHEN AIR INC

REGION 12 - PHILADELPHIA, PA

www.kitchenairinc.com

550 W. BRIDGE ST., SPACE 2A, MORRISVILLE, PA 19067

SAMPLE JOB

DATE: 00/00/00

DWG. #: #####

DRAWN BY: #####

SCALE: 3/4" = 1' - 0"

MASTER DRAWING

SHEET NO. 3